



India Meteorological Department  
(Ministry of Earth Sciences)

BULLETIN NO.: 05(ARB/01/2021)

TIME OF ISSUE: 0200 HOURS IST

DATED: 15.05.2021

FROM: INDIA METEOROLOGICAL DEPARTMENT (FAX NO. 24643965/24699216/24623220)

TO: CONTROL ROOM, NDM, MINISTRY OF HOME AFFAIRS (FAX.NO. 23092398/23093750)

CONTROL ROOM NDMA (FAX.NO. 26701729)

CABINET SECRETARIAT (FAX.NO.23012284, 23018638)

PS TO HON'BLE MINISTER FOR S & T AND EARTH SCIENCES (FAX NO.23316745)

SECRETARY, MOES (FAX NO. 24629777)

H.Q. (INTEGRATED DEFENCE STAFF AND CDS) (FAX NO. 23005137/23005147)

DIRECTOR GENERAL, DOORDARSHAN (23385843) DIRECTOR GENERAL, AIR (23421101, 23421105, 23421219)

PIB MOES (FAX NO. 23389042)

UNI (FAX NO. 23355841)

D.G. NATIONAL DISASTER RESPONSE FORCE (NDRF) (FAX NO. 26105912, 2436 3260)

DIRECTOR, PUNCTUALITY, INDIAN RAILWAYS (FAX NO. 23388503)

CHIEF SECRETARY, KERALA (FAX NO. 0471-2327176)

ADMINISTRATOR, LAKSHADWEEP ISLANDS (FAX NO. 0413-262184)

CHIEF SECRETARY, KARNATAKA (FAX NO. 080-22258913)

CHIEF SECRETARY, GOA (FAX NO. 0832-2415201)

CHIEF SECRETARY, MAHARASHTRA (FAX NO. 022- 22028594)

CHIEF SECRETARY, GUJARAT (FAX NO. 079-23250305)

CHIEF SECRETARY, DAMAN & DIU (FAX NO. 0260-2230775)

CHIEF SECRETARY, DADRA & NAGAR HAVELI (FAX NO. 0260-2645466)

CHIEF SECRETARY, TAMIL (FAX NO. 044-25672304)

**Sub: Deep Depression intensified into a Cyclonic Storm “Tauktae” (pronounced as Tau’Te) over Lakshadweep area and adjoining southeast & eastcentral Arabian Sea: Cyclone watch for south Gujarat & Diu coasts**

The **Deep Depression** over Lakshadweep area and adjoining southeast & eastcentral Arabian Sea moved northwards with a speed of about 07 kmph during past 06 hours, intensified into a **Cyclonic Storm “Tauktae” (pronounced as Tau’Te)** over Lakshadweep area and adjoining southeast & east central Arabian Sea and lay centred at 2330 hours IST of 14<sup>th</sup> May, 2021 near latitude 12.0°N and longitude 72.6°E, about 100 km north-northwest of Amini Divi, 290 km west-northwest of Kannur (Kerala), 1010 km south-southeast of Veraval (Gujarat).

It is very likely to intensify further into a Severe Cyclonic Storm during next 24 hours. It is very likely to move north-northwestwards and reach near Gujarat coast by 18<sup>th</sup> May morning.

Forecast track and intensity are given in the following table:

Date/Time(IST)	Position (Lat. °N/ long. °E)	Maximum sustained surface wind speed (Kmph)	Category of cyclonic disturbance
14.05.21/2330	12.0/72.6	60-70 gusting to 80	Cyclonic Storm
15.05.21/0530	12.9/72.6	70-80 gusting to 90	Cyclonic Storm
15.05.21/1130	13.6/72.5	80-90 gusting to 100	Cyclonic Storm
15.05.21/1730	14.4/72.4	95-105 gusting to 115	Severe Cyclonic Storm
15.05.21/2330	15.1/72.2	110-120 gusting to 130	Severe Cyclonic Storm
16.05.21/1130	16.5/71.6	130-140 gusting to 155	Very Severe Cyclonic Storm
16.05.21/2330	17.9/70.9	140-150 gusting to 165	Very Severe Cyclonic Storm
17.05.21/1130	19.1/70.1	145-155 gusting to 165	Very Severe Cyclonic Storm
17.05.21/2330	20.6/69.3	150-160 gusting to 175	Very Severe Cyclonic Storm
18.05.21/1130	22.2/69.1	135-145 gusting to 160	Very Severe Cyclonic Storm
18.05.21/2330	23.8/69.4	85-95 gusting to 105	Severe Cyclonic Storm

Spatial rainfall distribution: Isolated: <25%, A few: 26-50%, Many: 51-75%, Most: 76-100%

Rainfall amount (mm): Heavy rain: 64.5 – 115.5, Very heavy rain: 115.6 – 204.4, Extremely heavy rain: 204.5 or more.

## Warnings:

### (i) Rainfall:

- **Lakshadweep Islands:** Light to moderate rainfall at most places with heavy to very heavy falls at isolated places on 15<sup>th</sup> May and heavy falls at isolated places on 16<sup>th</sup> May.
- **Kerala:** Light to moderate rainfall at most places with heavy to very heavy falls at a few places on 15<sup>th</sup> and heavy to very heavy falls at isolated places on 16<sup>th</sup> & 17<sup>th</sup> May.
- **Tamil Nadu (Ghat districts):** Light to moderate rainfall at many places with heavy to very heavy falls at isolated places on 15<sup>th</sup> May.
- **Karnataka (coastal & adjoining Ghat districts):** Light to moderate rainfall at most places with heavy to very heavy falls at a few places with extremely heavy falls at isolated places on 15<sup>th</sup> and heavy falls at isolated places on 16<sup>th</sup>.
- **Konkan & Goa:** Light to moderate rainfall at most places with heavy to very heavy falls at a few places over south Konkan & Goa and heavy to very heavy falls at isolated places over north Konkan on 15<sup>th</sup> and heavy to very heavy falls at isolated places on 16<sup>th</sup>.
- **Gujarat:** Light to moderate rainfall at many places with heavy falls at isolated places very likely over coastal districts of Saurashtra on 16<sup>th</sup>, at most places with heavy to very heavy falls at a few places on 17<sup>th</sup> and with heavy to very heavy falls at a few places extremely heavy falls ( $\geq 20$  cm) at isolated places over Saurashtra & Kutch on 18<sup>th</sup>.
- **Southwest Rajasthan:** Light to moderate rainfall at many places with heavy falls at isolated places very likely on 17<sup>th</sup> & 18<sup>th</sup> May.

### (ii) Wind warning

- Squally weather with wind speed reaching 60-70 kmph gusting to 80 kmph is very likely over southeast Arabian Sea and adjoining Lakshadweep – Maldives area and equatorial Indian Ocean during next 06 hours.
- It is likely to increase gradually becoming Gale wind speed reaching 70 – 80 kmph gusting to 90 kmph over east-central Arabian Sea and adjoining southeast Arabian Sea and Lakshadweep area from 15<sup>th</sup> May morning.
- Squally wind speed reaching 50-60 kmph gusting to 70 kmph along & off Kerala - Karnataka coasts on 15<sup>th</sup> May.
- Squally wind speed reaching 40-50 kmph gusting to 60 kmph likely along & off south Maharashtra & Goa coasts on 15<sup>th</sup> and Gale winds speed reaching 60-70 kmph gusting to 80 kmph along & off south Maharashtra –Goa coasts on 16<sup>th</sup> May.
- Squally wind speed reaching 40-50 kmph gusting to 60 kmph likely over northeast Arabian Sea and along & off south Gujarat & Daman and Diu coasts on 17<sup>th</sup> morning and gradually increase becoming Gale winds speed reaching 90-100 kmph gusting to 115 kmph over northeast Arabian Sea along & off Gujarat coast from the early hours of 18<sup>th</sup> May and increase gradually thereafter till 18<sup>th</sup> morning.

### (iii) Sea condition

- Sea conditions will be very rough over southeast Arabian Sea and adjoining Lakshadweep - Maldives area & equatorial Indian Ocean during next 06 hours.

**Spatial rainfall distribution: Isolated: <25%, A few: 26-50%, Many: 51-75%, Most: 76-100%**

**Rainfall amount (mm): Heavy rain: 64.5 – 115.5, Very heavy rain: 115.6 – 204.4, Extremely heavy rain: 204.5 or more.**

- Sea condition over eastcentral Arabian Sea will be high to very high on 15<sup>th</sup> & 16<sup>th</sup> May and over northeast Arabian Sea from 17<sup>th</sup> May.
- Sea conditions will be rough to very rough over Comorin area and along & off Kerala coast on 15<sup>th</sup>, very rough to High over east central Arabian Sea along & off Karnataka coast on 15<sup>th</sup> May and Maharashtra – Goa coasts on 15<sup>th</sup> & 16<sup>th</sup> May. It is very likely to be very rough to High over northeast Arabian Sea along & off south Gujarat coast from 17<sup>th</sup> May morning and very high to Phenomenal from 18<sup>th</sup> morning.

**(iv) Tidal wave Warning:**

- Tidal wave of about 1 meter height above the astronomical tide is very likely to inundate low lying areas of Lakshadweep Islands on 15<sup>th</sup> & 16<sup>th</sup> May.

**(v) Fishermen Warning**

- The fishermen are advised not to venture into southeast Arabian Sea, Lakshadweep – Maldives areas, east central Arabian Sea along & off Karnataka coast, eastcentral Arabian Sea and along & off Maharashtra – Goa coasts and into eastcentral & adjoining northeast Arabian Sea along & off Gujarat coast till 18<sup>th</sup> May.
- Those who are out at Sea over north & adjoining eastcentral Arabian Sea are advised to return to the coast.

**(vi) Impact expected over southeast, eastcentral & northeast Arabian Sea, Lakshadweep – Maldives area & Lakshadweep Islands and along & off Kerala, Karnataka, Goa, Maharashtra, Gujarat coasts and also the coastal & adjoining districts of all these States:**

- Very rough to high seas, squally weather and gale winds around the system centre will affect shipping vessels and fishing operations.
- Inundation of low lying areas of the Islands of Lakshadweep till 16<sup>th</sup> May.
- Very heavy to extremely heavy rainfall causing flash floods & landslides over the coastal districts of Kerala, Karnataka & Goa till 16<sup>th</sup> May and Saurashtra, Kutch during 18<sup>th</sup> – 19<sup>th</sup> May.
- Thunder squalls & Lightning could cause adverse impact on Human & Livestock as well as damage to Loose & unsecured structures along the coast line.

**(vii) Advisory:**

- Fishermen are advised not to venture into Arabian Sea till 18<sup>th</sup> May
- Ships are advised to avoid the area
- Ports along the west coast of India may take necessary precautions.
- Naval base operations may maintain necessary pre-cautions
- Tourism activities may be restricted over the area specified for squally weather & rough Sea warning.

*The next bulletin will be issued at 0530 hrs IST of 15<sup>th</sup> May, 2021.*

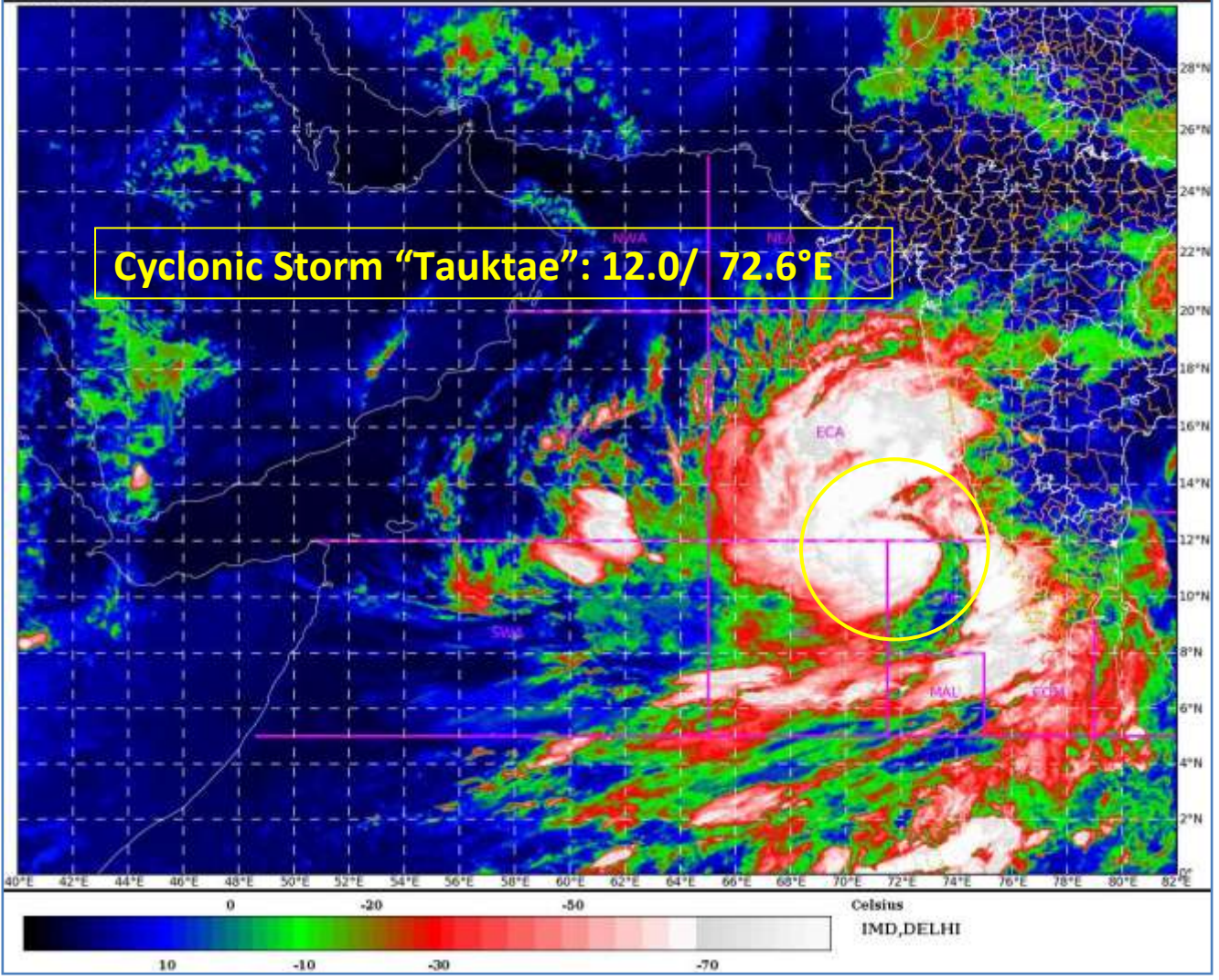
**(Shobhit Katiyar)  
Scientist-C, RSMC, New Delhi**

**Copy to: ACWC Chennai/ ACWC Mumbai/ MC Goa/ MC Bengaluru/ CWC Ahmedabad/ Thiruvananthapuram.**

**Spatial rainfall distribution: Isolated: <25%, A few: 26-50%, Many: 51-75%, Most: 76-100%**  
**Rainfall amount (mm): Heavy rain: 64.5 – 115.5, Very heavy rain: 115.6 – 204.4, Extremely heavy rain: 204.5 or more.**

SAT : INSAT-3D IMG  
IMG\_TIR1\_TEMP 10.8 um  
ARABIAN\_SEA

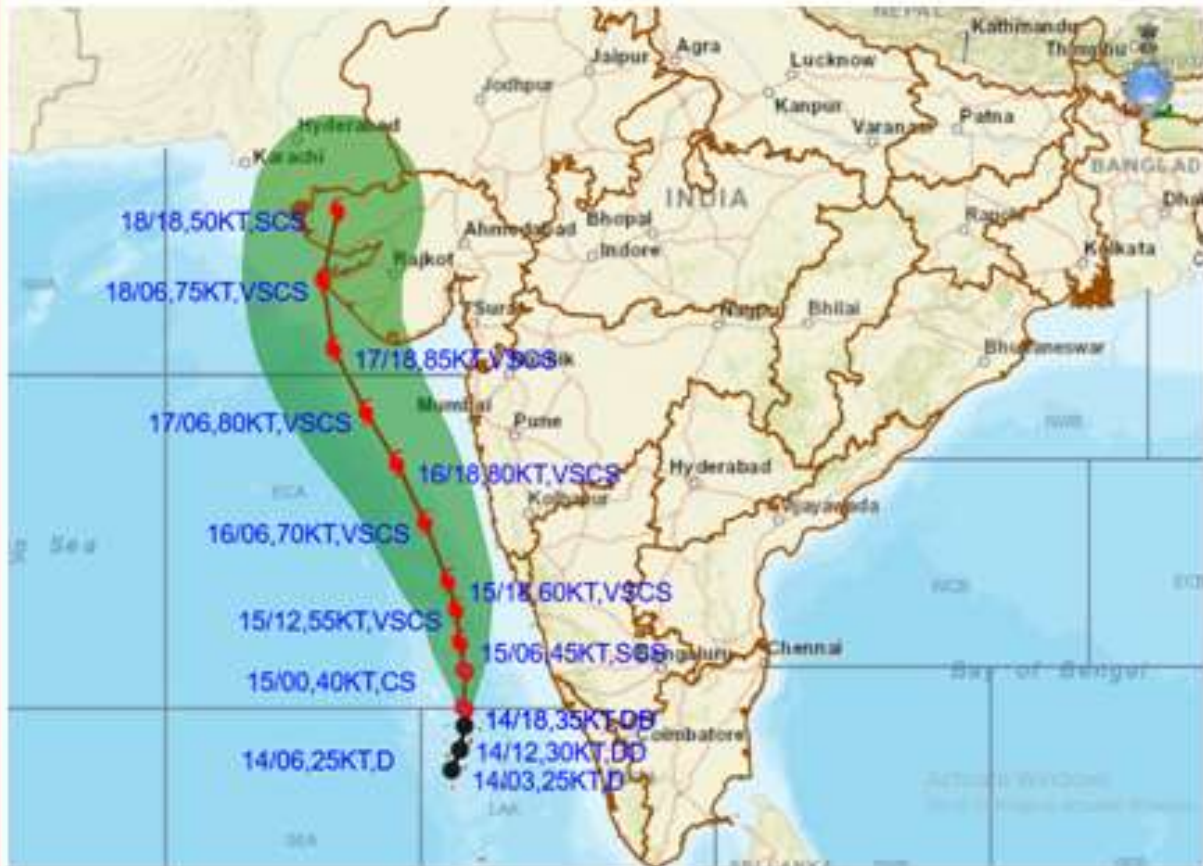
14-05-2021/(1930 to 1956) GMT  
15-05-2021/(0100 to 0126) IST



Spatial rainfall distribution: Isolated: <25%, A few: 26-50%, Many: 51-75%, Most: 76-100%  
Rainfall amount (mm): Heavy rain: 64.5 – 115.5, Very heavy rain: 115.6 – 204.4, Extremely heavy rain: 204.5 or more.



**OBSERVED AND FORECAST TRACK ALONG WITH CONE OF UNCERTAINTY OF CYCLONIC STORM "TAUKTAE" OVER LAKSHADWEEP AND ADJOINING SOUTHEAST & EASTCENTRAL ARABIAN SEA BASED ON 1800 UTC OF 14<sup>TH</sup> MAY, 2021**



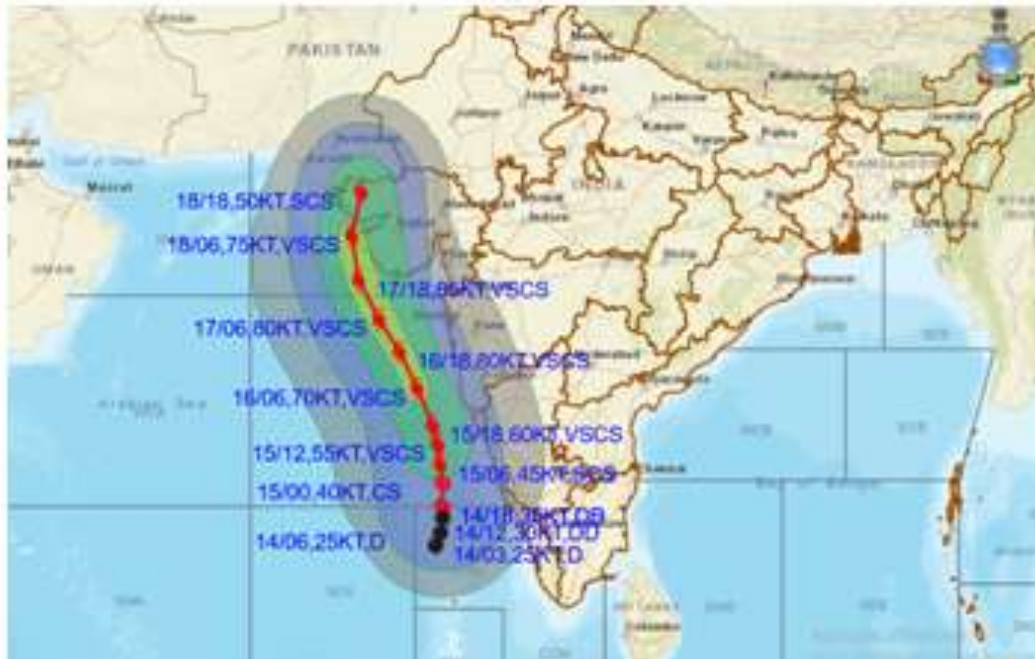
DATE/TIME IN UTC  
 IST=UTC + 0530  
 L: LOW PRESSURE AREA  
 WML: WELL MARKED LOW PRESSURE AREA  
 D: DEPRESSION (17-27 KT)  
 DD: DEEP DEPRESSION (28-33 KT)  
 CS: CYCLONIC STORM (34-47 KT)  
 SCS: SEVERE CYCLONIC STORM (48-63KT)  
 VSCS: VERY SEVERE CYCLONIC STORM (64-89 KT)  
 ESCS: EXTREMELY SEVERE CYCLONIC STORM (90-119 KT)  
 SuCS: SUPER CYCLONIC STORM (≥20 KT)

- LESS THAN 34 KT
- 34-47 KT
- ≥ 48 KT
- OBSERVED TRACK
- FORECAST TRACK
- CONE OF UNCERTAINTY

Spatial rainfall distribution: Isolated: <25%, A few: 26-50%, Many: 51-75%, Most: 76-100%  
 Rainfall amount (mm): Heavy rain: 64.5 – 115.5, Very heavy rain: 115.6 – 204.4, Extremely heavy rain: 204.5 or more.



**OBSERVED AND FORECAST TRACK ALONGWITH QUADRANT WIND DISTRIBUTION OF CYCLONIC STORM "TAUKTAE" OVER LAKSHADWEEP AND ADJOINING SOUTHEAST & EASTCENTRAL ARABIAN SEA BASED ON 1800 UTC OF 14<sup>TH</sup> MAY, 2021**



DATE/TIME IN UTC

IST=UTC + 0530

L: LOW PRESSURE AREA

WML: WELL MARKED LOW PRESSURE AREA

D: DEPRESSION (17.27 KT)

DD: DEEP DEPRESSION (28.33 KT)

CS: CYCLONIC STORM (34.47 KT)

SCS: SEVERE CYCLONIC STORM (48.63KT)

VSCS: VERY SEVERE CYCLONIC STORM (64.89 KT)

ESCS: EXTREMELY SEVERE CYCLONIC STORM (90-119 KT)

SaCS: SUPER CYCLONIC STORM (≥ 120 KT)

● LESS THAN 34 KT

○ 34-47 KT

● ≥ 48 KT

— OBSERVED TRACK

— FORECAST TRACK

— CONE OF UNCERTAINTY

AREA OF MAXIMUM SUSTAINED WIND SPEED:

28-33 KT (52-61 KMPH)

34-49 KT (62-91 KMPH)

50-63 KT (92-117 KMPH)

≥ 64 KT (≥118 KMPH)

**IMPACT OVER THE SEA**

MSW (knot/kmph)	Impact	Action
28-33 (52-61)	Very rough seas	Total suspension of fishing operations
34-49 (62-91)	High to very high seas	Total suspension of fishing operations
50-63 (92-117)	Very high seas	Total suspension of fishing operations
≥ 64 (≥118)	Phenomenal	Total suspension of fishing operations

Spatial rainfall distribution: Isolated: <25%, A few: 26-50%, Many: 51-75%, Most: 76-100%

Rainfall amount (mm): Heavy rain: 64.5 – 115.5, Very heavy rain: 115.6 – 204.4, Extremely heavy rain: 204.5 or more.